



WELCOME TO THE

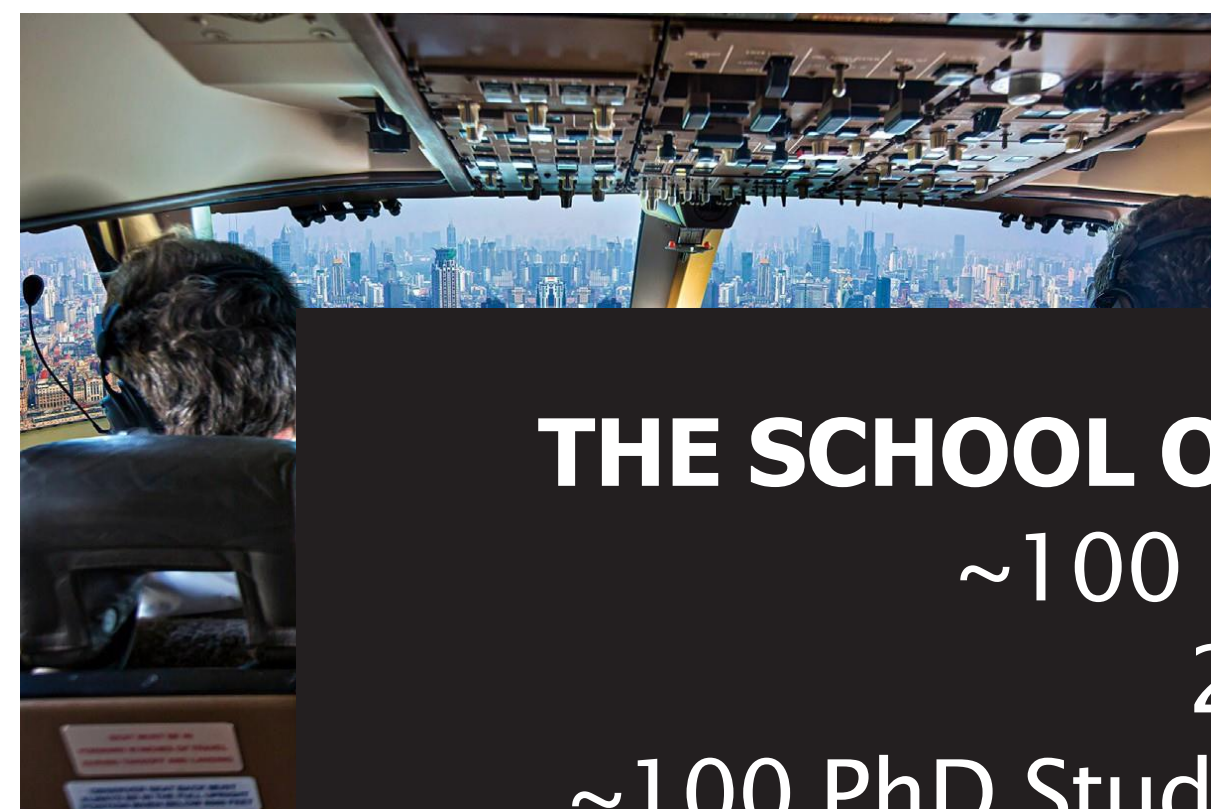
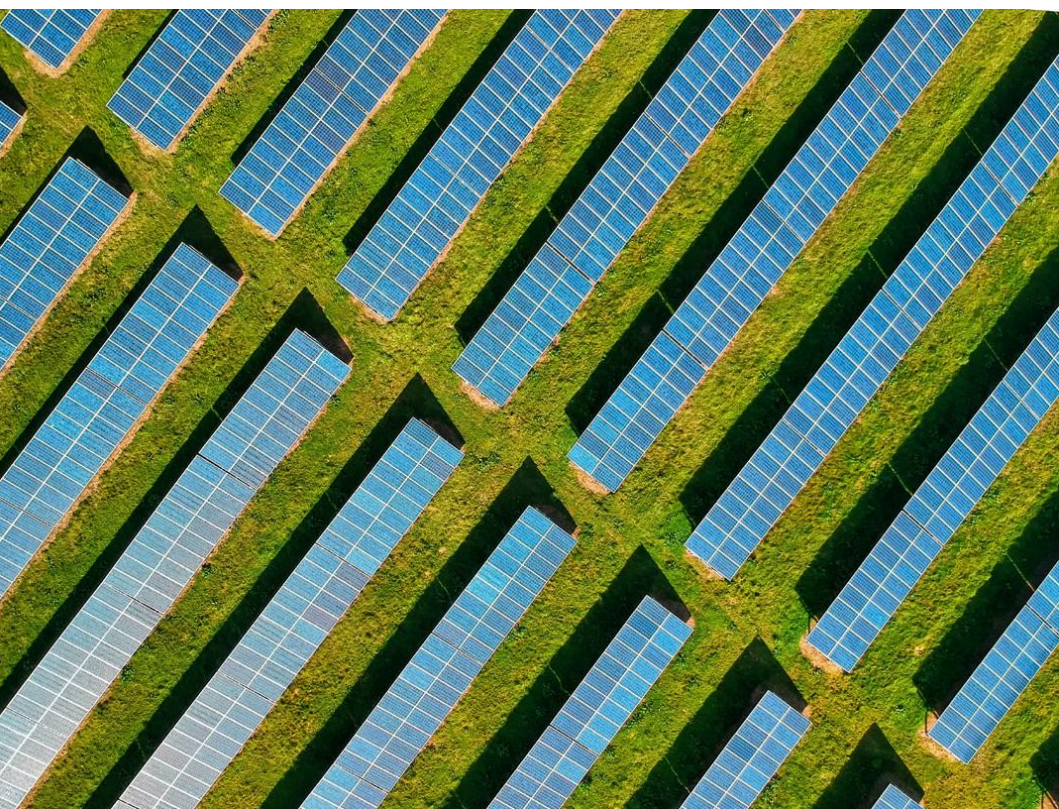
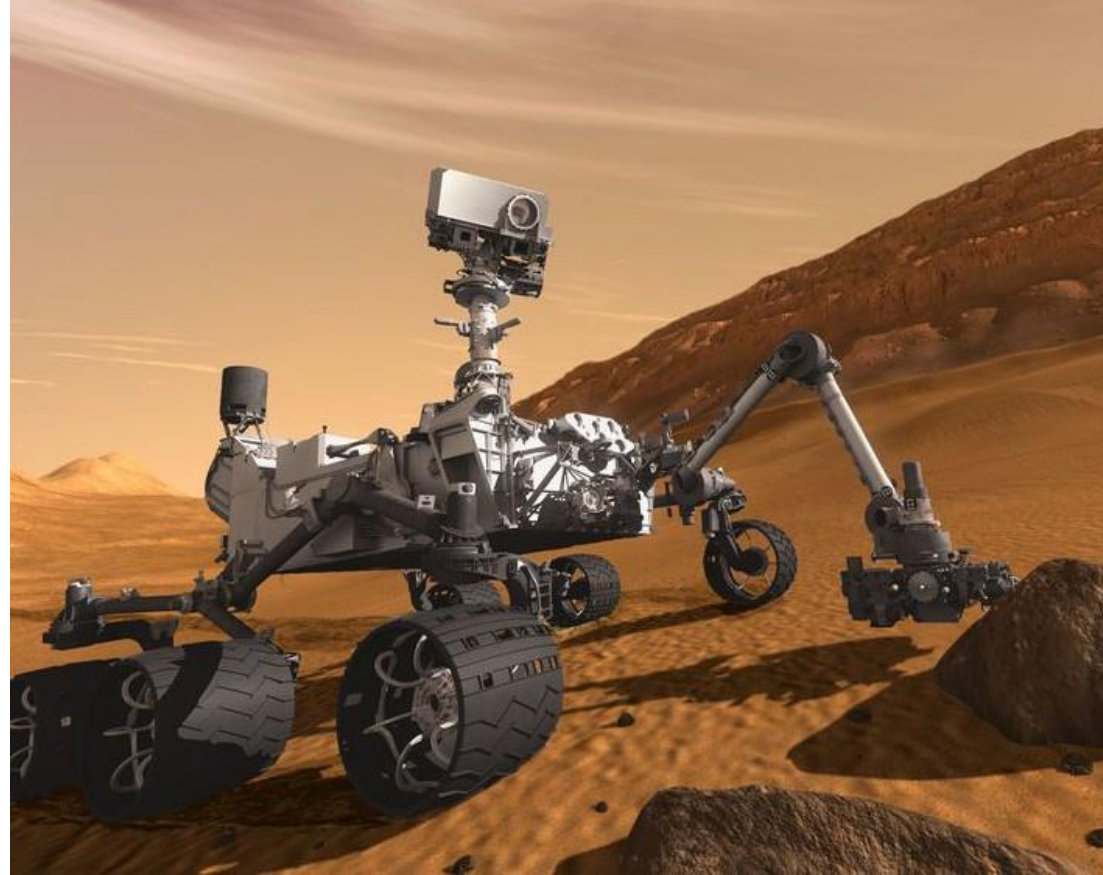
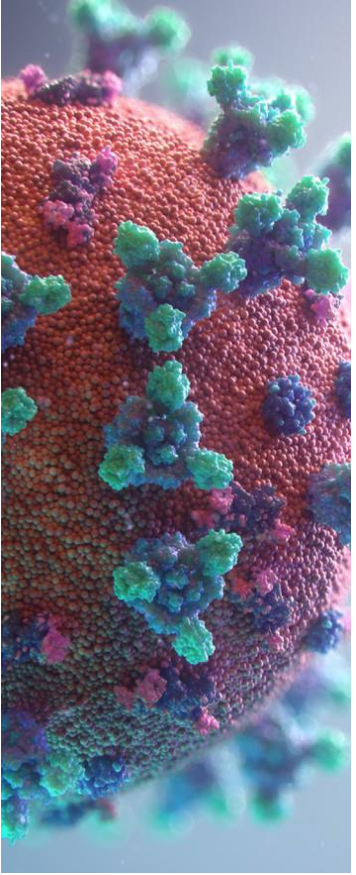
SCHOOL OF ENGINEERING

ANU O WEEK

An aerial photograph of a large, blue lake with a prominent fountain on the left side. A bridge spans across the lake in the middle ground. In the background, there are rolling hills and a city skyline, including a tall tower. The sky is clear and blue.

WELCOME & ACKNOWLEDGEMENT OF COUNTRY

Professor Nick Barnes
School of Engineering



THE SCHOOL OF ENGINEERING COMPRISES OF:
~100 academic staff (including postdocs),
20 technical and administrative staff,
~100 PhD Students, ~900 undergraduate students
and ~75 masters students



OUR RESEARCH STRENGTHS
Aerospace | Energy | Environmental | Mechatronics |
Information & Signal Processing



SOEN EDUCATIONAL OFFERINGS

- Bachelor of Engineering
- Bachelor of Engineering — Research & Development
- Bachelor of Engineering in Software Engineering
- Masters of Engineering

UG Majors

- Electronic and Communications Systems
- Mechatronic Systems
- Renewable Energy Systems
- Environmental Systems
- Aerospace Systems
- Nuclear Systems

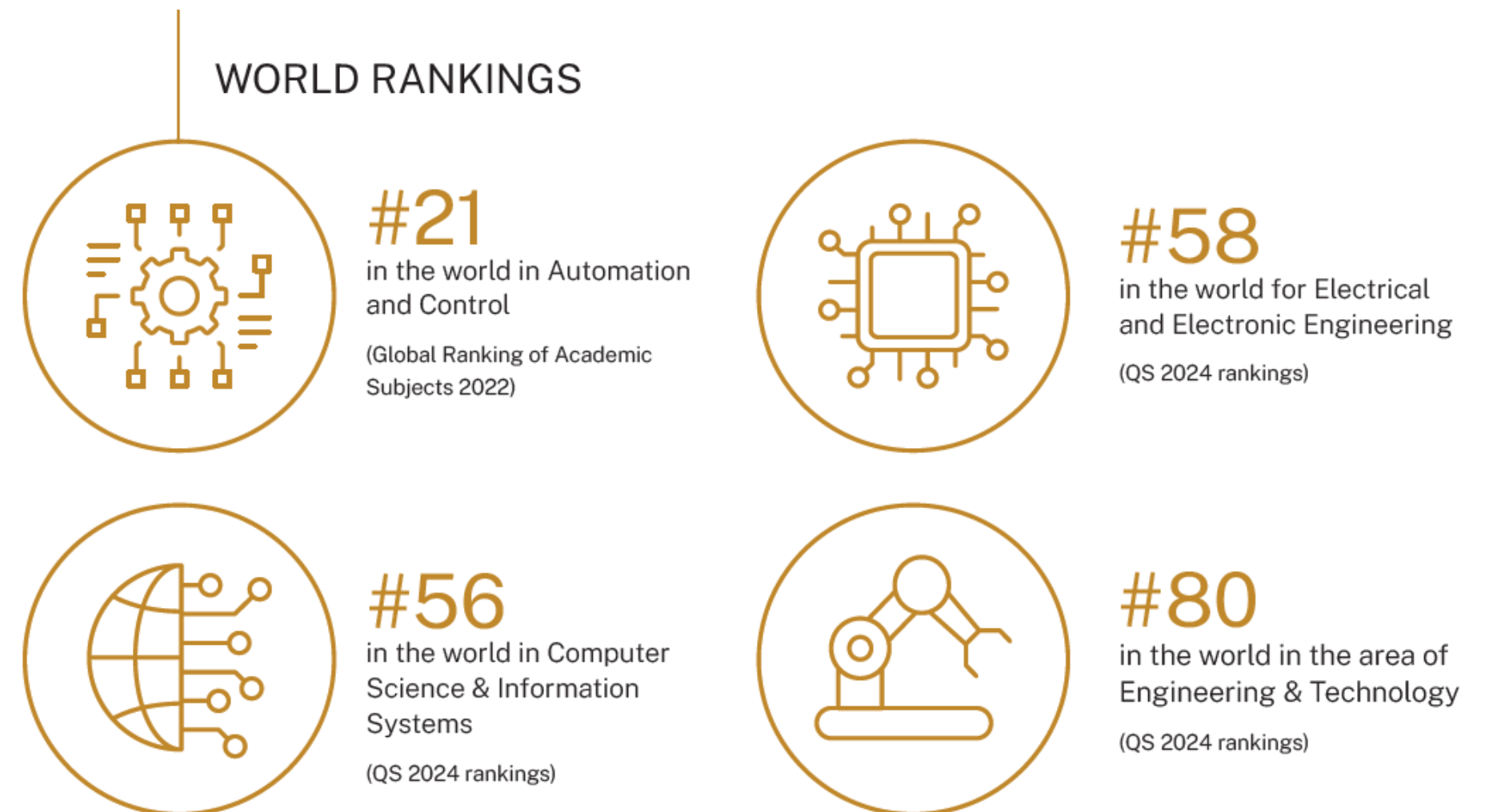
PG Degrees

- Energy Systems
- Electrical Engineering
- Robotics, Automation and Control

Ranking In The World

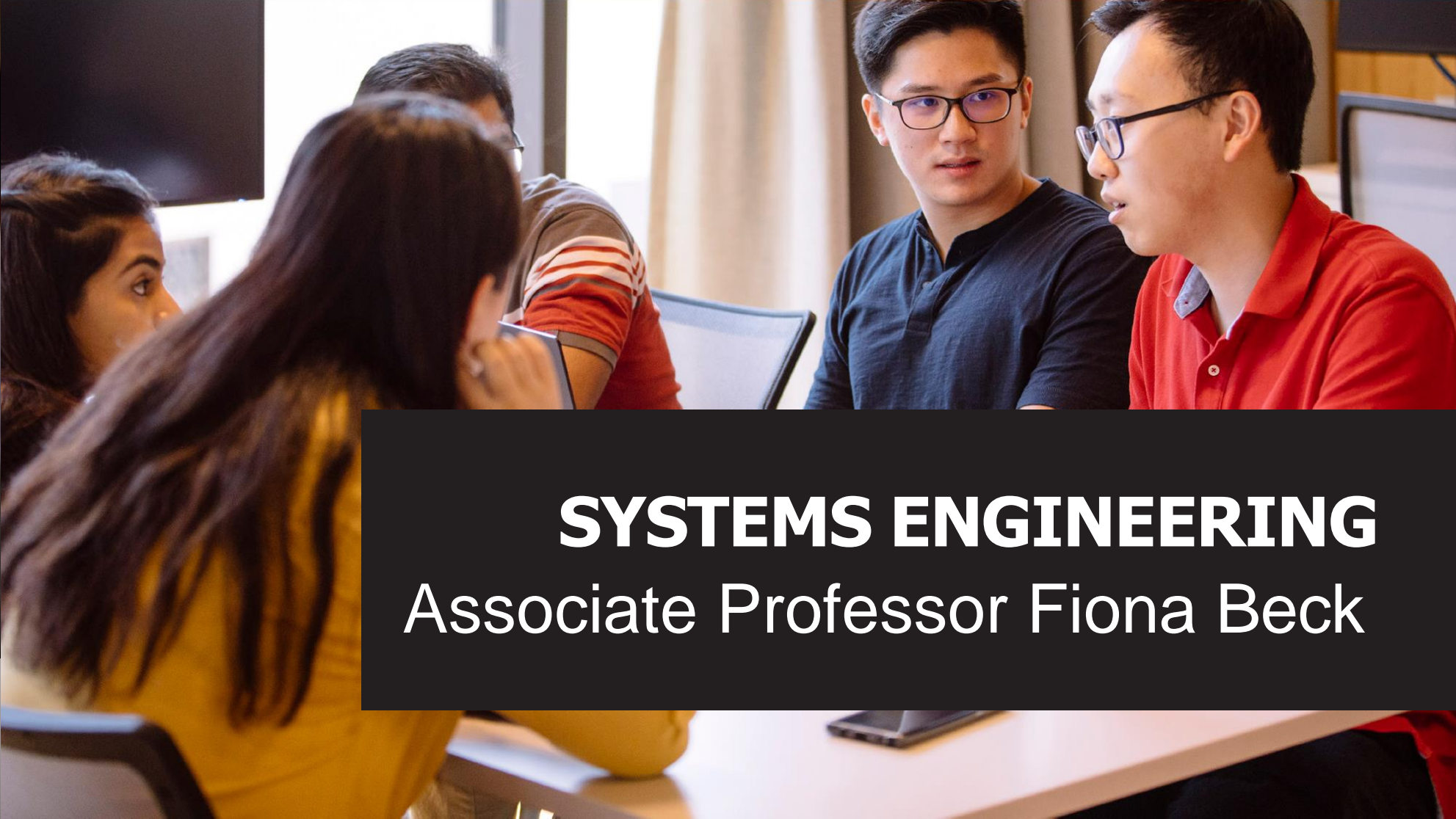
Australian National University (ANU) is driven by a culture of excellence in everything we do. ANU leads in Australia for the best student-to-staff ratio¹ and ranks first in the country for graduate employability².

1. THE World University Rankings 2024
2. THE Global University Employability Rankings 2023-2024



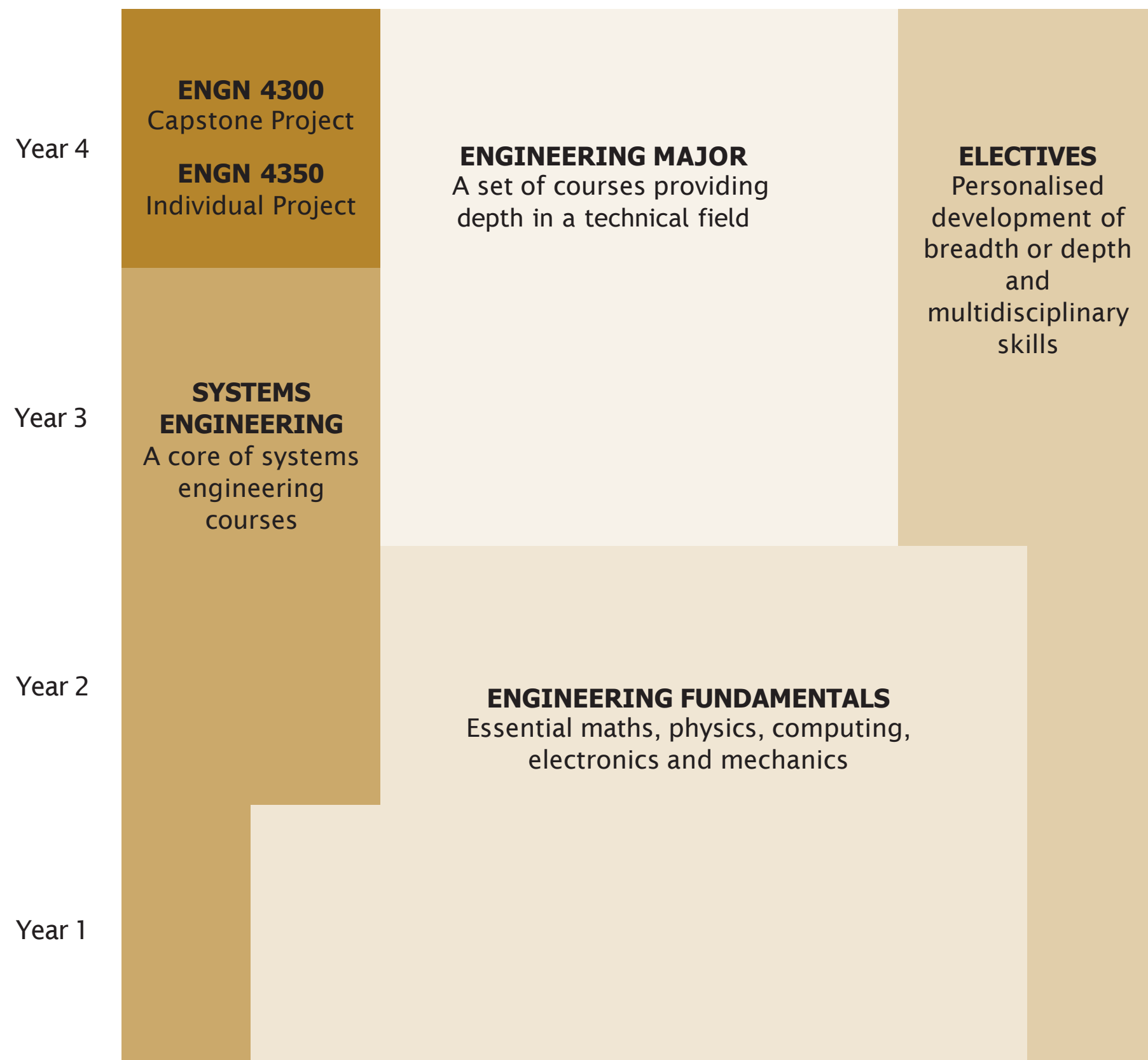
OUTLINE

1. Director Welcome — (Prof. Nick Barnes) [1:30-1:35pm]
2. Systems Engineering — (A. Prof. Fiona Beck) [1:35-1:45pm]
3. Student Support (1:45-2:20pm)
 - Student Services, Employability and Experience
 - Library Services
 - Respectful Relationships Unit
 - Student Wellbeing
 - Diversity, Belonging, Inclusion and Equity
5. Tour of Facilities (2:20-2:45pm)
6. Program Convenor Sessions (2:45-3:15pm)
7. Afternoon Tea



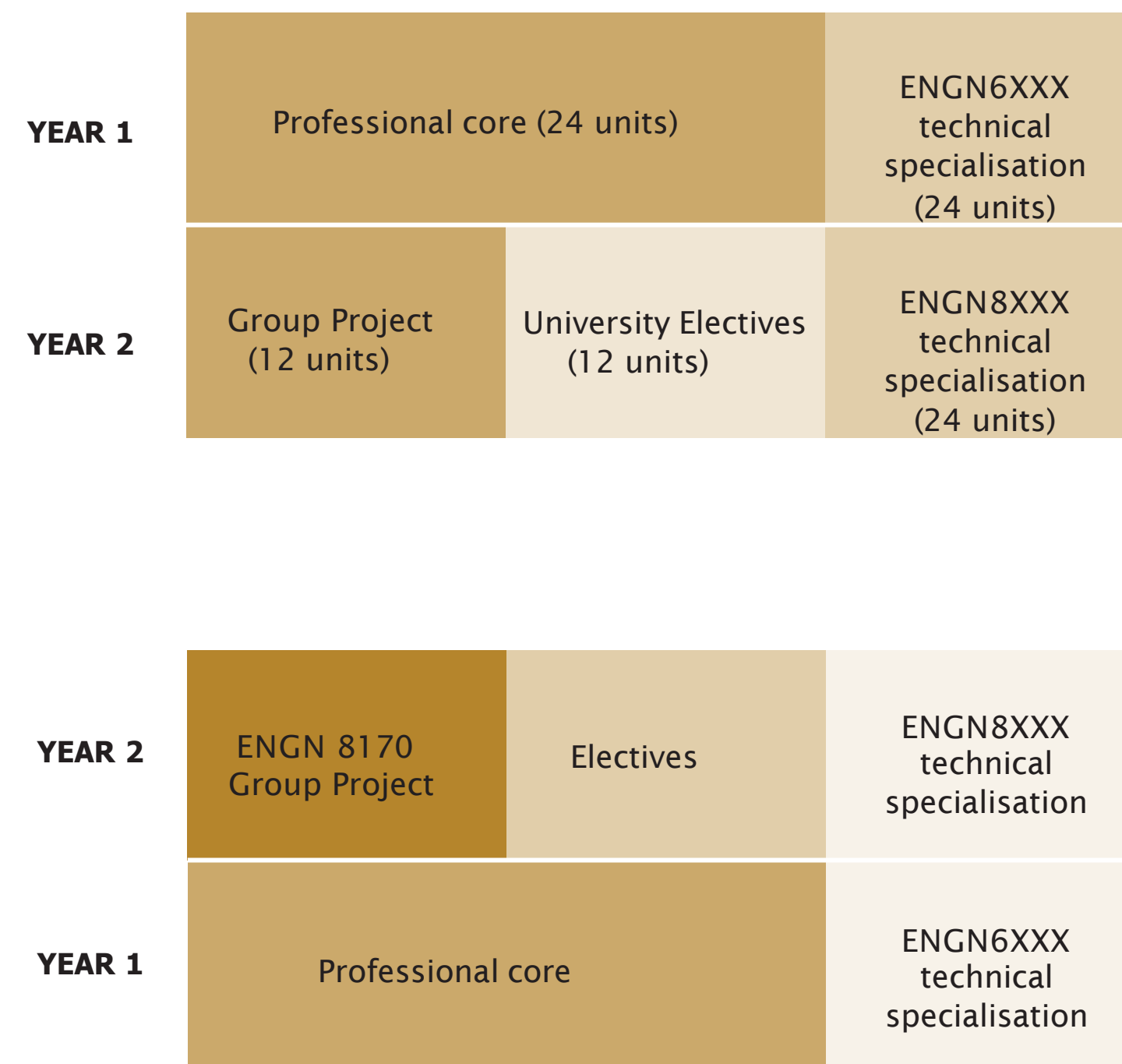
SYSTEMS ENGINEERING
Associate Professor Fiona Beck

BACHELOR OF ENGINEERING

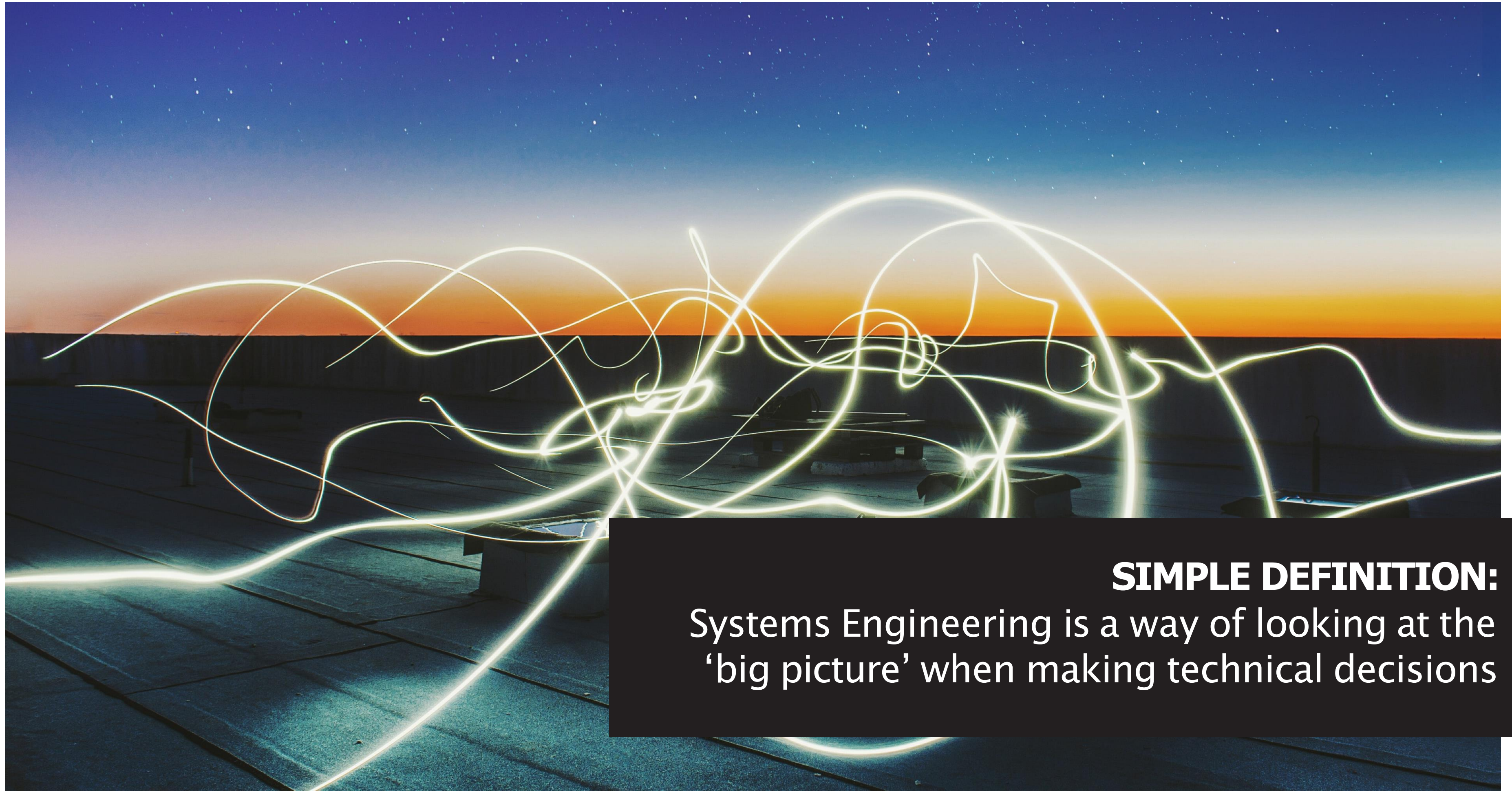


<http://eng.anu.edu.au/study/bachelor/>

MASTER OF ENGINEERING



<http://eng.anu.edu.au/study/master/>



SIMPLE DEFINITION:
Systems Engineering is a way of looking at the
'big picture' when making technical decisions

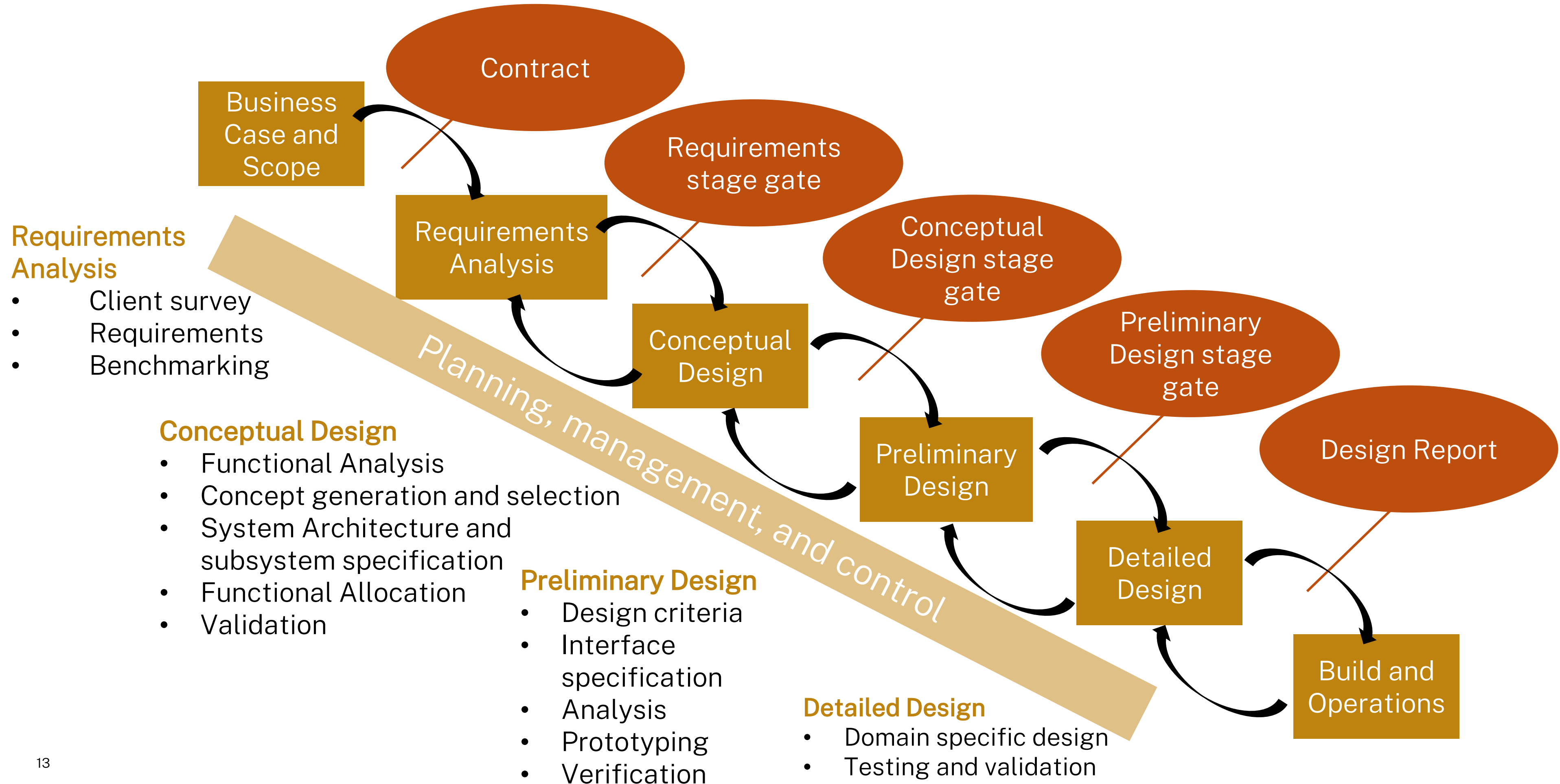


ANU DEFINITION OF SYSTEMS ENGINEERING:

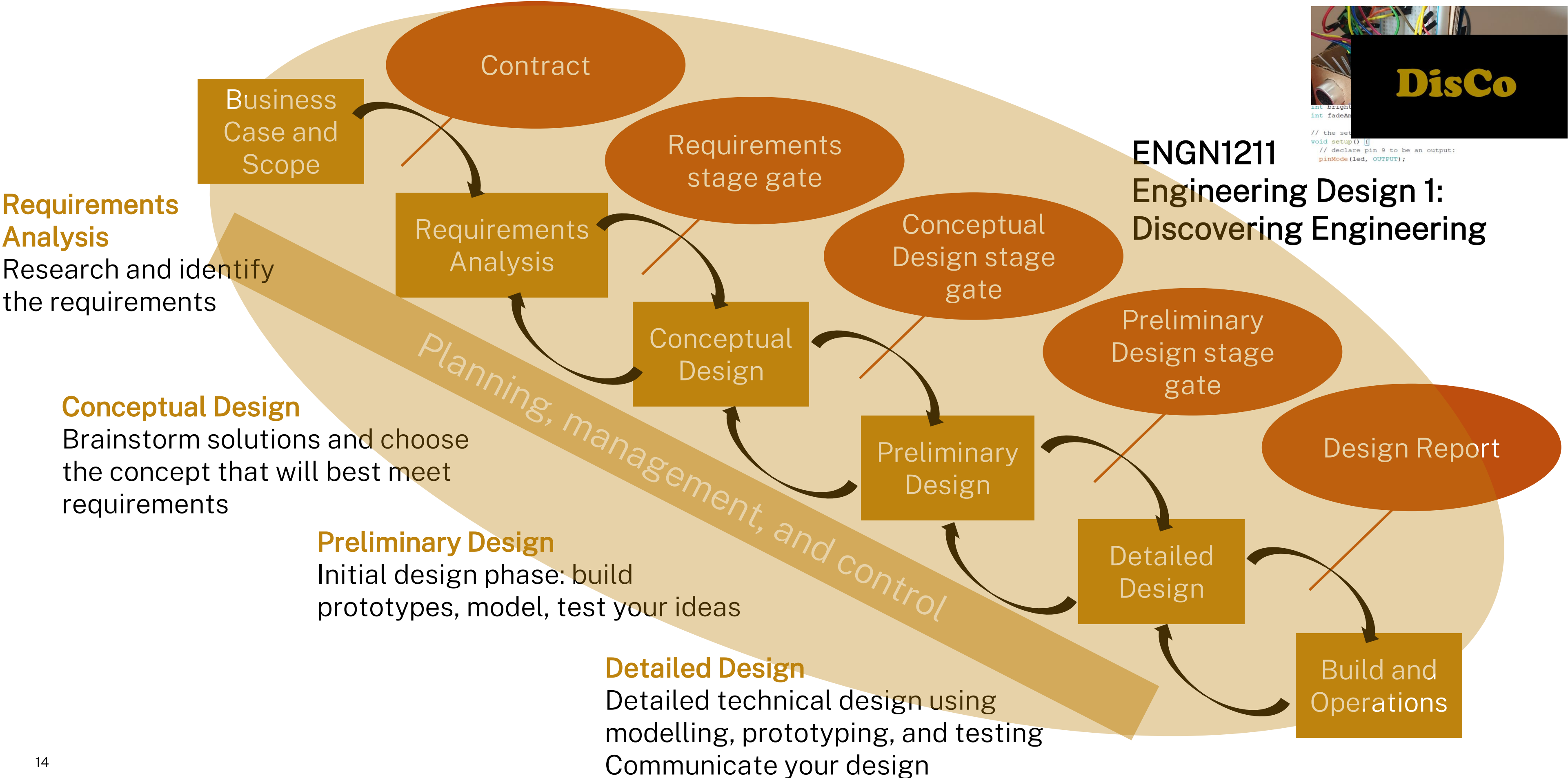
A system is the combination of elements that function together to produce the capability required to meet a need.

Systems engineering is a process for scoping, designing, building, operating and decommissioning systems to address a specified need.

ANU Systems Engineering Process (ASEP)



Simplified ANU Systems Engineering Process (ASEP)



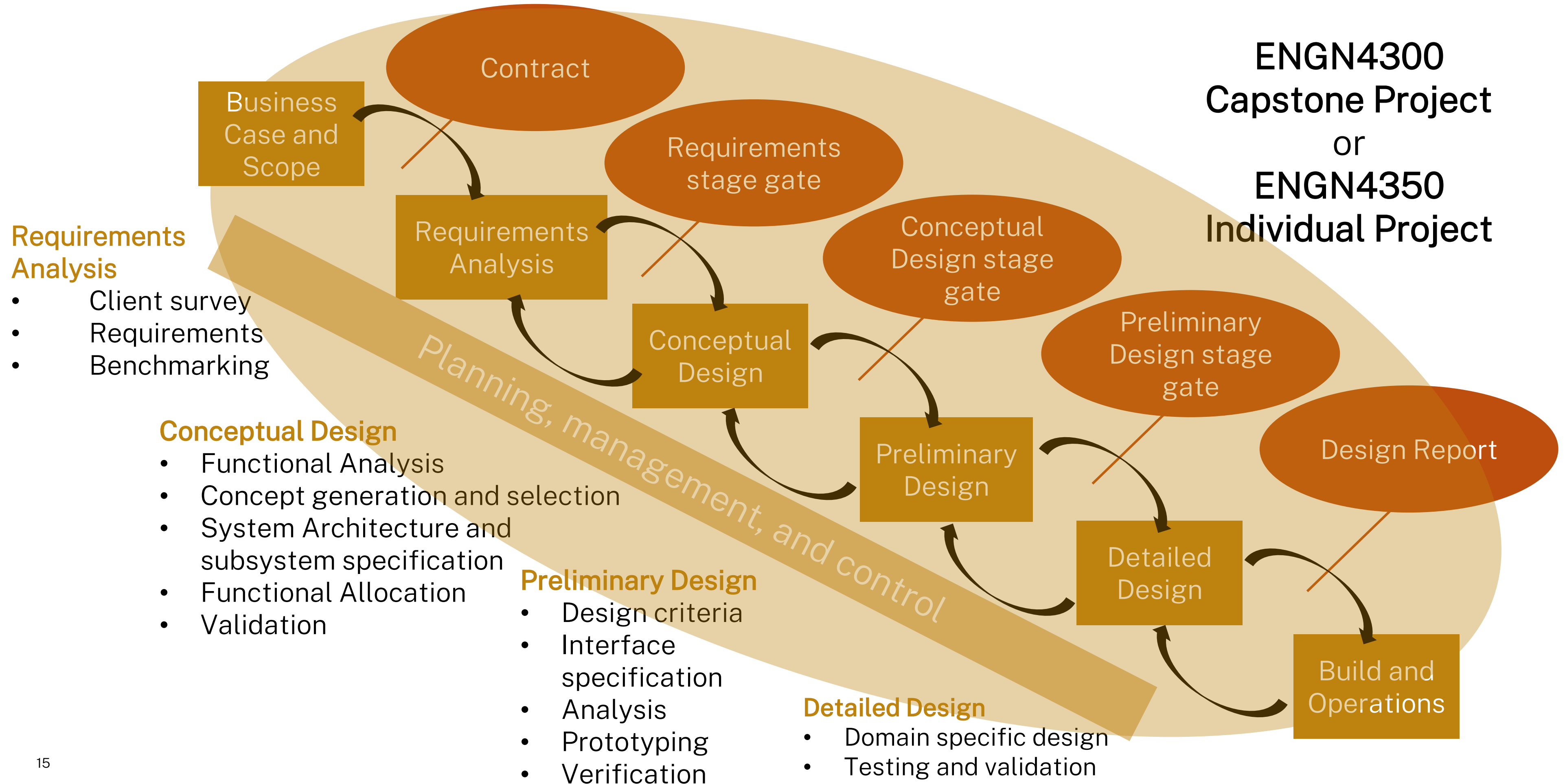
Requirements Analysis
Research and identify the requirements

Conceptual Design
Brainstorm solutions and choose the concept that will best meet requirements

Preliminary Design
Initial design phase: build prototypes, model, test your ideas

Detailed Design
Detailed technical design using modelling, prototyping, and testing
Communicate your design

ANU Systems Engineering Process (ASEP)



Humanitarian Engineering Minor

Extends a discipline major to explore how to apply that to complex humanitarian and development situations

FOUR COURSES CONSISTING OF:

1. Introduction to development course (from an elective list)
2. Engineering for a Humanitarian Context course (ENGN3013).
Can be combined with immersive experiences with partners overseas.
3. Humanitarian and development context elective course
4. Multidisciplinary elective course

• Commenced in 2019



1. Nepal



2. India



3. Australia

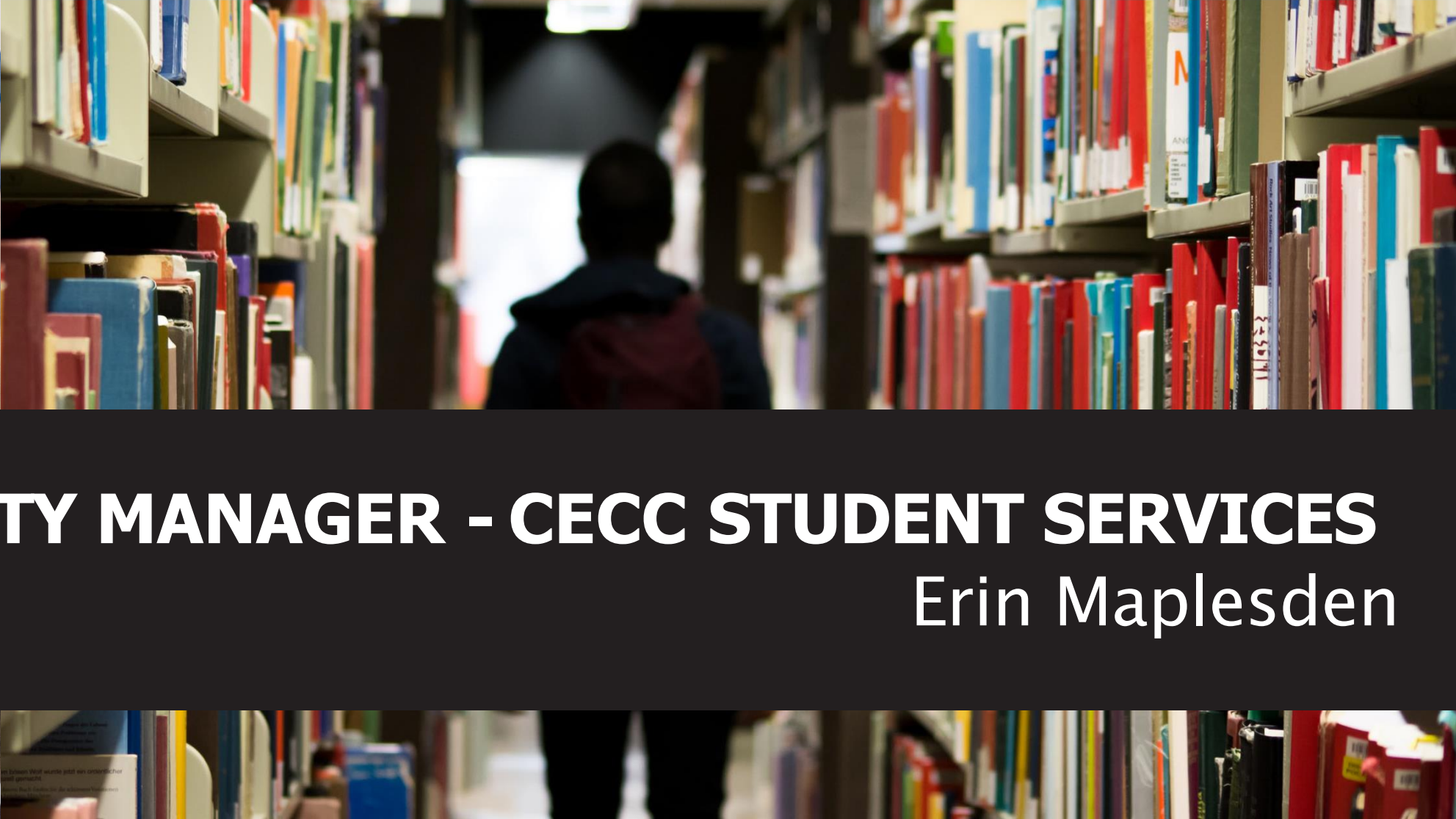


4. Laos



6. Papua New Guinea

New Zealand



DEPUTY MANAGER - CECC STUDENT SERVICES
Erin Maplesden

STUDENT SERVICES & EMPLOYABILITY



STUDENT SERVICES - What we do





Information for students

Welcome to the College of Engineering, Computing and Cybernetics (CECC) Students' site. Whether you are a continuing CECC student or just starting out, the CECC Students site has resources and information to help you manage your program, get involved in social, academic, and work integrated learning programs, discover a range of learning abroad opportunities and stay well.



CECC Students website

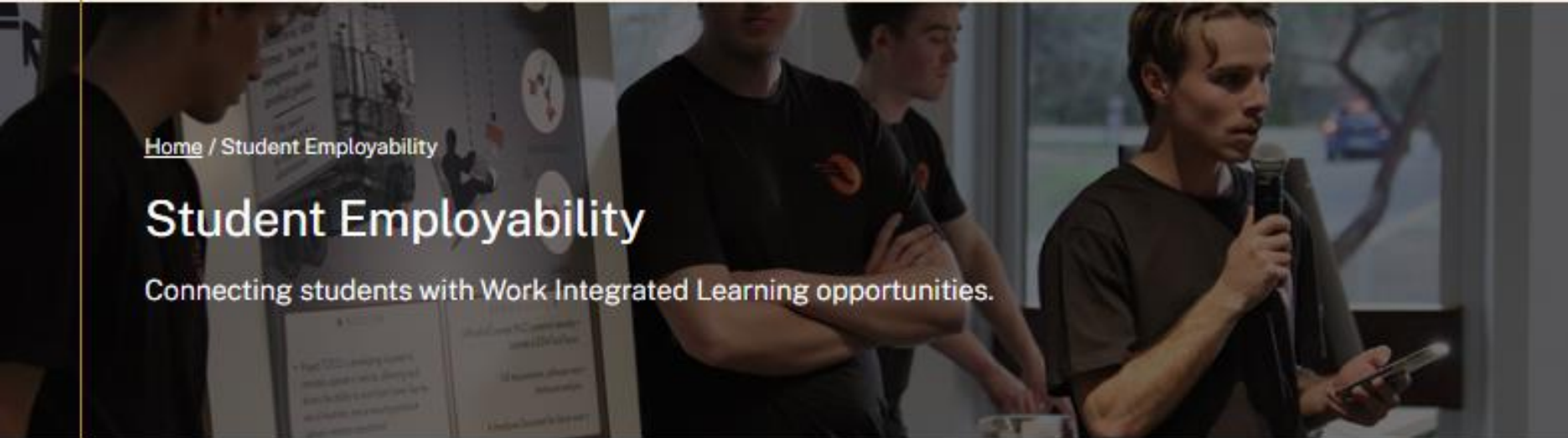
Our website provides students with information on our processes and answers to frequently asked questions. Explore detailed guides, helpful resources, and get all your queries addressed in one convenient place.

Bookmark this page!



STUDENT EMPLOYABILITY - What we do





[Home](#) / [Student Employability](#)

Student Employability

Connecting students with Work Integrated Learning opportunities.



Industry Group Projects

Explore Capstone and TechLauncher



Internships

Understand Internships at CECC



Current Opportunities

Learn about opportunities for CECC students.



Work Experience

Understand more about Work Experience for CECC students.



More in student-employability

[Industry Group Projects](#)

[Internships](#)

[Current Opportunities](#)

[Work Experience](#)

CECC Student Employability webpage

Many student opportunities including a range of career related experiences, internships, jobs, graduate programs, workshops, networking events, are shared on the Student Employability webpage.

For any questions or to book an appointment, please email studentemployability.cecc@anu.edu.au



Student Code of Conduct

- **Our Values:** Fairness, kindness, and respect in all interactions.
- **Mandatory Training:** Complete the Rights, Relationships, and Respect online training.
- **Understanding Decisions:**
 - Learn the rules and responsibilities
 - Manage expectations realistically
 - Respectfully seek clarification when needed
- **Support:** Our team is here to help with advice and referrals throughout your degree.



SUPPORT SERVICES & RESOURCES

Seek help early!



YOU

CECC

- Student Services & Employability
- Conveners
- CECC Associate Dean (Education)
- School Associate Director (Education)

Wider ANU

- ANU Health
- Student Central
- Counselling
- Respectful Relationships Unit
- Accessibility
- Academic Skills
- ANUSA
- Dean of Students
- Careers
- Security



ANU Accessibility

Supports students with disabilities, mental health conditions, chronic illnesses, short-term health issues, carers, and elite athletes.

Apply for your
Education Access Plan
(EAP) early. Don't wait!



Your voice matters



A core part of partnership between students and the University.



We monitor course development, academic development and student satisfaction.



The Student Experience of Learning and Teaching (SELT)

Where to provide feedback:

Student Services:

studentadmin.cecc@anu.edu.au

SoEN Associate Director Education:

adir.education.eng@anu.edu.au

CECC Associate Dean Education:

ad.education.cecc@anu.edu.au

ANUSA:

sa.admin@anu.edu.au



Class Representatives

Ensure student voices are heard by course conveners, lecturers, tutors, and the College.

Gain interpersonal, dispute resolution, leadership, and communication skills valued by employers.

Play an active role in shaping the direction of your education.

Stay informed about issues impacting the university and higher education.

Influence course design and delivery, contributing to current and future improvements.



CONTACT YOUR CONVENER

Bachelor of Engineering (Honours)	Xiangyun (Sean) Zhou	beng.cecc@anu.edu.au
Bachelor of Engineering (Research and Development) (Honours)	Daniel MacDonald	bengrd.cecc@anu.edu.au
Bachelor of Engineering (Honours) in Software Engineering/Bachelor of Software Engineering	Alex Potanin	BSENG.convener.comp@anu.edu.au
Master of Engineering Programs	Philipp Braun	meng.cecc@anu.edu.au



CONTACT US



studentadmin.cecc@anu.edu.au

studentemployability.cecc@anu.edu.au



Drop into and see us at Level 2, CSIT Building 108, between 10:00am – 4:00pm, Monday to Friday.



Book an appointment with us via [Career Hub](#) (choose ‘CECC Student Appointments’ tab).

INCLUSIVE AND RESPECTFUL COMMUNITIES

(Previously known as the Respectful Relationships Unit)

Supporting ANU communities to change the systems and cultures that drive sexual assault and sexual harassment.



Australian
National
University

What do we do?

Cultural change initiatives

Provide consultation for operational and strategic planning

Support restorative approaches to planning, group and team work, debriefing issues or events

Provide consultation on inclusive practice

Prevention and consultation support

Sexual Violence Prevention Toolkit

Rights, Relationships and Respect e-learning module

Prevention initiatives for specific community needs and contexts

Bespoke training and workshop offerings

Research and evaluation

Events and community engagement

Education and engagement events

Event support for those wishing to adjust their practices

LGBTIQA+ Ally Network opportunities

Student Engagement

Increased opportunities for student input in RRU initiatives in 2024

Activations



Your rights and responsibilities

As a member of the ANU community, you are entering a space in which staff and students have a right to be protected from discrimination and harassment, whether direct or indirect.

In return, it is expected that all individuals will uphold these same standards in all interactions with students, staff and visitors to the University. Bullying, harassment and disrespectful treatment of other students, staff and visitors will not be tolerated.

Protected attributes include:

- Sex
- Pregnancy
- Marital or relationship status
- Family responsibility
- Breastfeeding
- Race, colour, ethnic or entho-religious background
- Descent or national identity
- Age
- Sexual orientation
- Gender identity, transgender identity or intersex status
- Disability
- Union affiliation
- Political conviction
- Religious belief
- +++

Contact us

We are all responsible for building a safer community, and there is a specialized staff available to support you.

Inclusive and Respectful Communities

Level 3, Di Riddell Building 154

www.anu.edu.au/respect

respect@anu.edu.au

ally@anu.edu.au



ANU LIBRARY

Cathy Burton & Mel Burrows



Australian
National
University

HANCOCK LIBRARY



- astronomy & astrophysics
- chemistry
- computer science
- cybernetics
- engineering
- health & medicine
- life sciences
- mathematics
- physics
- psychology

COLLECTIONS



- Online and print resources
- Search our e-resources and databases anywhere, any time
- ANU ITS working remotely
- ANU ITS reverse proxy

SEARCHING

The screenshot displays the ANU SuperSearch interface. At the top left is the ANU logo and name. The navigation bar includes links for 'NEW LIBRARY SEARCH', 'BROWSE SEARCH', 'JOURNAL SEARCH', 'DATABASES A-Z', 'ANU OPEN RESEARCH', and 'DOCUMENT SUPPLY REQUEST'. A 'Sign in' button and a 'Menu' dropdown are on the right. The search bar contains the term 'Automation' and a dropdown menu is open, showing options: 'Everything' (highlighted with a yellow arrow), 'Library Catalogue', 'Journal articles & eResources', 'Course Readings', and 'ANU Open Research'. Below the search bar, a banner prompts users to 'Sign in to get complete results and to request items'. The left sidebar offers filters for 'Refine your results', 'Sort by Relevance', 'Format', 'Library', 'Subject', 'Author/Creator', 'Date Range', 'Journal Title', 'Language', 'Collection', and 'Availability'. The main results area shows four items:

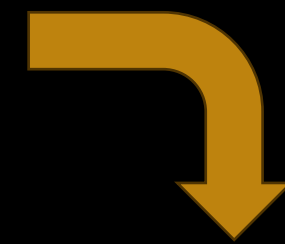
- 1. JOURNAL **Automation (Cleveland, Ohio : 1987)**, ©1987-1991. Available Online >
- 2. JOURNAL **Automation (Basel)**, Multidisciplinary Digital Publishing Institute, publisher. 2020-. Available Online >
- 3. BOOK **Automation**, Salas, Eduardo. 2002. Available Online >
- 4. ARTICLE **Automation**, Major, Danny. ITNow, 2023, Vol.65 (4), p.66-66.



SUBJECT GUIDES

Library information

Academic skills	Book an appointment	Borrowing
Branches	Contact us	Digital literacy training
Guide for new students	How-to guides	My library record
Online orientation	PC availability in the Library	Subject guides
Suggest a Library purchase	Upcoming events and exhibitions	Video tours



» Find & access » Subject guides » Engineering, Computing, and Cybernetics

Engineering, Computing, and Cybernetics

These guides cover subjects such as engineering, computing and cybernetics. More guides coming soon!

Subject Guides

- [Computer Science](#)
- [Cybernetics](#)
- [Engineering](#)

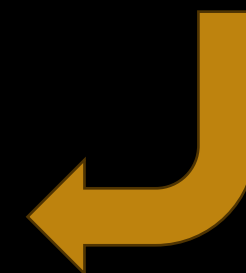
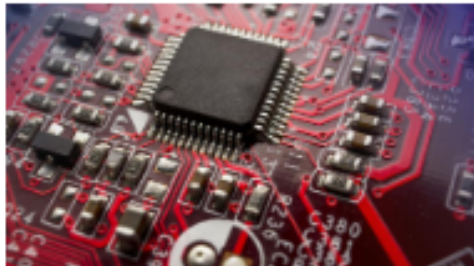


Contacts

Subjects:
Engineering,
Computing, and
Cybernetics

Engineering, Computing, and Cybernetics »

These guides cover subjects such as engineering, computing and cybernetics. More guides coming soon!



E-RESOURCES & DATABASES

Australian National University LIBRARY ANU Library

Find & access Collections Research & learn Using the Library News & events About

Services for

- Find & access » Search the Library's collection of e-journals, e-resources and databases and find subject-specific resources.
- SuperSearch
- Catalogue
- E-journal
- E-resources & databases »
- Subject guides
- How to guides
- Related links
 - ANU Archives »
 - Ask a librarian »
 - Past exam papers »
 - Subject area contacts »

E-resources & databases

Access electronic information repositories subscribed to by the Library.

A B C D E F G H I J K L M N O P Q R S T U V W X Y Z

Search by: Engineering Search

Search by title: Search

Show all e-resource titles Search

Engineering e-resources and databases

Start over | Check the Full Text E-Journals list

A B C D E F G H I J K L M N O P Q R S T U V W X Y Z

Search by: Engineering GO

Search by title: GO

Show all e-resource titles GO

1 to 14 of 14

- ACM digital library (Association for Computing Machinery) [show details]
- Australian architecture database [show details]
- Australian standards [show details]
- De Gruyter eBooks [show details]
- De Gruyter Online [show details]
- IZI Essentials Standards [show details]
- IEEE Xplore [show details]
- IFT Digital Library [show details]
- INIS: International Nuclear Information System [show details]
- MathSciNet: Mathematical Reviews [show details]
- Science database [show details]
- Standards Online Premium [show details]
- Walter De Gruyter eBooks [show details]
- Walter De Gruyter Online [show details]



BORROWING

	ANU staff, postgraduate & honours students	Undergraduates	External borrowers
Maximum number of items	100 (maximum of 4 reserve items*)	100 (includes up to 4 reserve items*)	15 (includes up to 6 orchestral sets)
Loan periods			
Books, serials and audio-visual materials	26 weeks	4 weeks	4 weeks
	2 renewals	6 renewals	6 renewals
Reserve items*	2-day** & 2-hour***	2-day** & 2-hour***	Use in Library only
Primary material (Law Library)	Use in Library only	Use in Library only	Use in Library only
Music scores	26 weeks	4 weeks	4 weeks
Laptops	7 days (students only)	7 days	n/a

- 100 items 4 weeks
- Student card to borrow



LIBRARY SPACES



anulib.anu.edu.au/bookaroom



GET SUPPORT



- book an appointment
- live chat
- “Ask a Librarian”
- FAQs

SUPPORTING STUDENT WELLBEING



Australian
National
University

ANU Student Safety and Wellbeing Team

HEALTH AND WELLBEING SERVICES

- At ANU, there are three main services for health and wellbeing support: ANU Medical Centre, Student Safety Wellbeing team (SSWT) and ANU Counselling.
- They are all located at building 156, Kambri.

SSWT	ANU Counselling	ANU Medical Centre
<ul style="list-style-type: none"> • Talk in confidence with case managers (background in health, social work, counselling). • Free. No referrals required. 	<ul style="list-style-type: none"> • Free, confidential, non-diagnostic service. • No referral or mental health care plan to access this service. • Upon booking, a clinician will assess your circumstances. 	<ul style="list-style-type: none"> • Appointments with doctors and nurses. • Health services, advice, vaccinations, immunisations. • Bulk-billed for students (no payment needed from you).



ANU STUDENT SAFETY AND WELLBEING

Free and confidential support for a range of issues that can impact on the student experience – transition to university and Canberra, relationship issues, domestic and intimate partner violence, financial concerns, mental health concerns, navigating ANU processes and much more ...

Centralised, trauma-informed first contact point for anyone impacted by sexual assault and / or sexual harassment

Case Managers have backgrounds in social work, human services and counselling.

Appointments available Monday to Friday

Students firstly supported and assessed through an intake process



FACTORS IMPACTING UNIVERSITY STUDENTS

- Academic pressures – high expectations, increased competition, uncertainty on employment outcomes
- Financial pressures – particular for students living away from home, those from low socio-economic backgrounds or limited income
- Relocation to participate in education leading to isolation particularly for international students, rural and remote students, etc
- General wellbeing issues – poor diet, alcohol and drug use, lack of sleep
- Pre-existing/underlying conditions can be exacerbated
- Low levels of help seeking behaviours

Orygen Under the Radar report https://www.orygen.org.au/Policy-Advocacy/Policy-Reports/Under-the-radar/Orygen-Under_the_radar_report.aspx?ext=
(AIHW, Mental Health Services Australia www.aihw.gov.au/reports/mental-health-services/mental-health-services-in-australia/report-contents/hospital-emergency-services)



IMPACT ON STUDIES

- 71.8% of students aged 16-25 years reported that there had been at least one day when they were totally unable to work or study due to symptoms of mental health problems in the past month.
- 62.4% of students aged 26-50+ years reported that there had been at least one day when they were totally unable to work or study due to symptoms of mental health problems in the past month.
- Lower grades
- Increase risk of disengaging with studies

2016 NTS Student Wellbeing Survey <https://www.headspace.org.au/assets/Uploads/headspace-NUS-Publication-Digital.pdf>



Mental health and wellbeing in the community

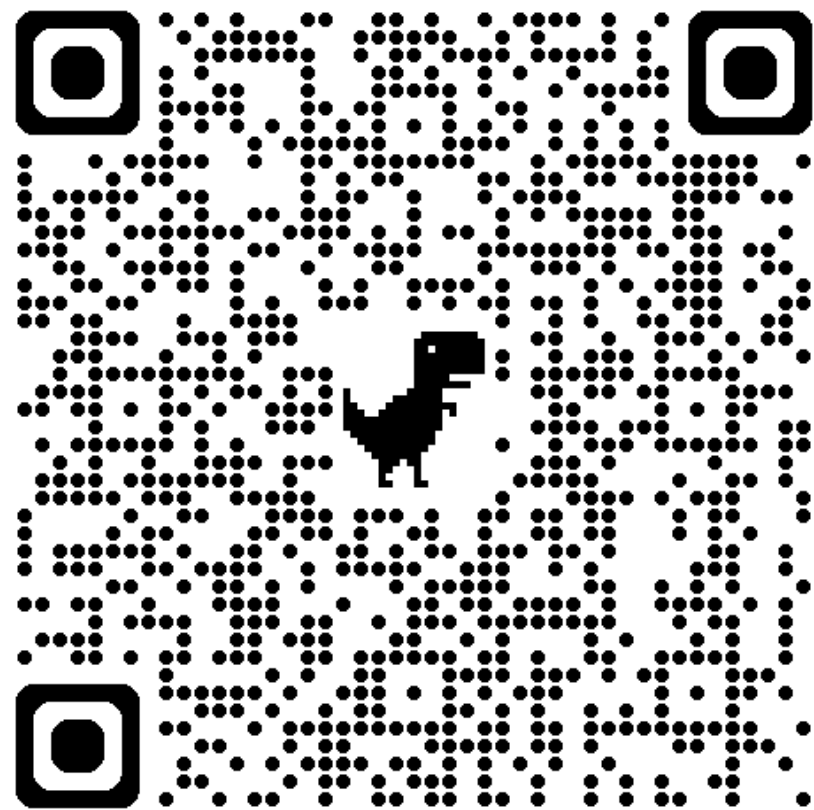
- Two in five (43.7%) Australians aged 16 – 85 years experienced a **mental health** disorder at some time in their life.
- Two in five (39.6%) **people aged 16 – 24** experienced a mental health disorder within the last 12 months
- **Anxiety** was the most common disorder reported (PTSD, OCD, GAD, social phobia and panic disorder)
- One in seven (13.6%) people aged 16-24 years and more than one in ten (11.0%) people aged 25-34 years reported an **affective disorder** within the last 12 months

ABS National Study of Mental Health and Wellbeing 2020 – 2021 - www.abs.gov.au/statistics/health/mental-health/national-study-mental-health-and-wellbeing/latest-release

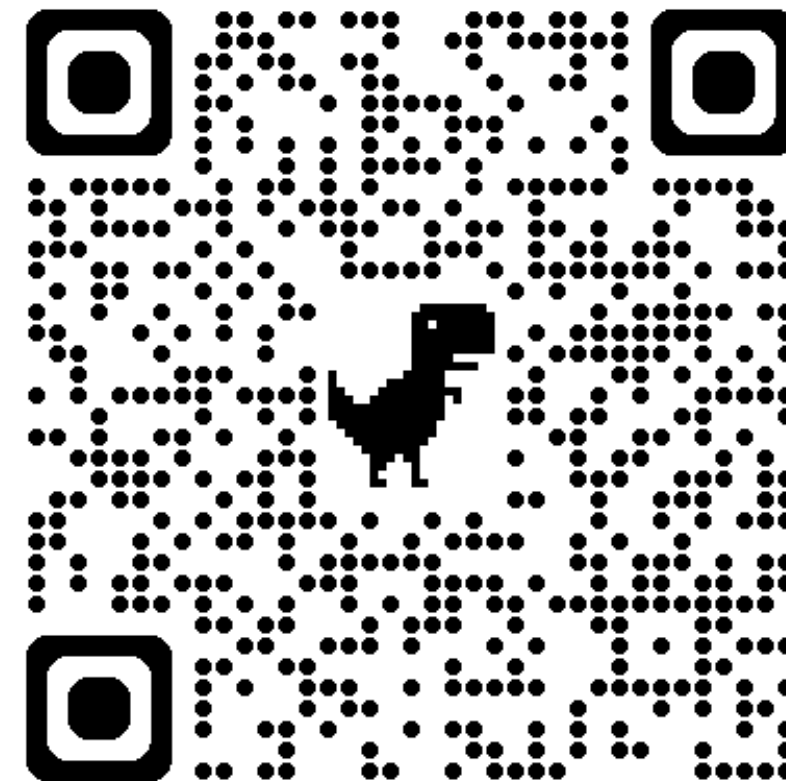


Harmful Behaviours Disclosure Response and Support

Further information:



Disclose an incident of sexual harassment, sexual assault, racism, ableism, harassment or discrimination:



TAKING CARE OF YOUR WELLBEING...

It's ok to:

- Feel overwhelmed!
- Not be sure if what you are experiencing is “normal”
- Feel homesick
- Need assistance from others
- Be unsure if I should talk about my mental health
- Not understand Australian support services and systems

We are here to help you during your ANU journey – just reach out!

24/7 ANU Wellbeing support hotline - 1300 05 327 or text 0488 884 170



STUDENT SAFETY AND WELLBEING



- Confidential and free
- Helping you navigate and understand mental health and wellbeing in the Australian context
- Relationship concerns (family, friends)
- Mental health - stress, anxiety, exam/assessment stress
- Adjusting to university and Canberra (homesickness)
- Financial concerns and support
- Domestic, family and partner violence
- Discrimination and other harmful behaviours concerns
- Sexual assault and harassment response
- Connection with specialist services at ANU and in the community
- Etc – no issues too small or too big!

Contact is easy – email student.wellbeing@anu.edu.au or phone 02 6125 2211

ANU COUNSELLING



- Confidential and free. Available to ANU students, who are currently in Australia.
- Talk to counsellors.
- One-on-one sessions. You will be given regular appointment slots – not a one-off visit.

What do counsellors do?

- Counsellors don't diagnose issues. They work with you to improve your mental health.
- They ask questions and listen to you in a non-judgmental, safe and confidential way.

What can I talk to counselling centre about?

- A range of issues including study stress, relationships, homesickness and anything else that's on your mind.

To book an appointment, email counsellingcentre@anu.edu.au or call 02 6125 2211

24/7 ANU Wellbeing support hotline - 1300 05 327 or text 0488 884 170


Accessing Student Safety and Wellbeing

» Home » Students » Health, safety & wellbeing

Health, safety & wellbeing

At ANU, we recognise that a healthy university supports student success. Here you will find a number of initiatives, programs and resources that will support your physical, social, spiritual and mental health to help you to maintain a healthy lifestyle during your studies.

Explore further important information on how to stay safe and secure on campus.



ANU Medical Centre »

The ANU Medical Centre is located on level 2 of the Health and Wellbeing Centre in Kambri.

Services are bulk-billed for ANU students. To book online and for more information, please refer to our webpage.

[I need help now](#)

Student Counselling and Wellbeing Services

ANU offers a variety of support options, including the ANU Counselling Services or ANU Student Safety and Wellbeing teams. Both services are free and confidential and provide person-centred and trauma-informed services for currently enrolled students.


ANU Counselling Services	ANU Student Safety and Wellbeing
-Non-diagnostic mental health service	-Case management services
-One-on-one counselling support and group programs	-Connection with services at ANU and community
-No mental health plan needed	-Practical support for a number of issues that can impact on your student experience
	-Sexual misconduct and harmful behaviours response

To read ANU Counselling Service or the Student Safety and Wellbeing team information on privacy and service delivery click here.

[How to book an appointment](#)

If you are seeking support or to make a disclosure following an incident of harmful behaviour (including sexual assault and sexual harassment) please complete the disclosure tool at Harmful Behaviours Disclosure Response and Support, or contact the Student Safety and Wellbeing team at student_wellbeing@anu.edu.au.


[Lodge Harmful Behaviours](#)



Getting help at ANU »

There are many services at ANU that can help you with your wellbeing, mental health, health and...


[Read more »](#)



Sexual harassment and sexual assault »

The University's holistic response to sexual assault ...

[Read more »](#)

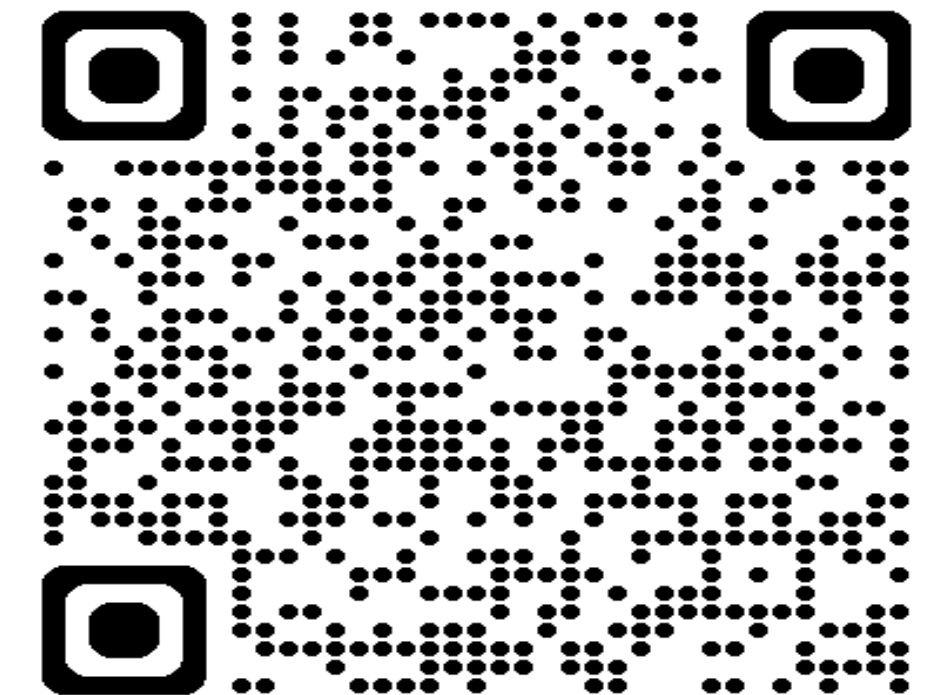


Harmful Behaviours »

The Australian National University values the diversity of our student and staff community and...

[Read more »](#)

Access to services at ANU and in the community



www.anu.edu.au/students/health-safety-wellbeing

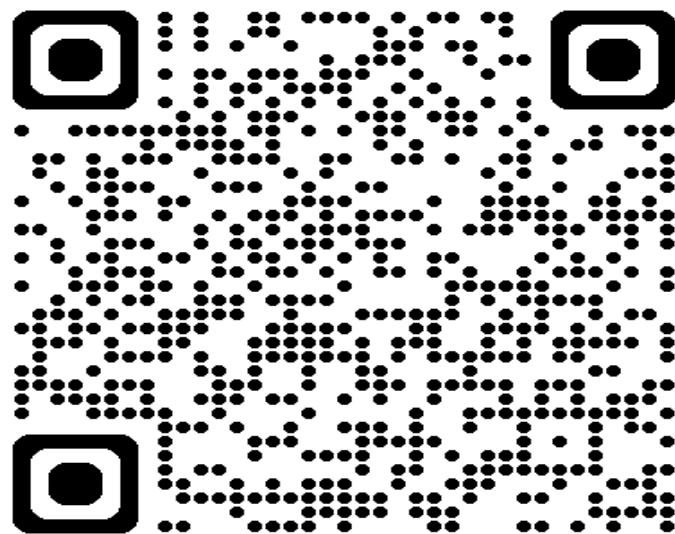


Accessing Student Safety and Wellbeing

How to book an appointment:

To book an appointment with ANU support services, visit the [Health, Safety & Wellbeing](#) or [Getting Help at ANU](#) webpages, and look for the "How to book an appointment" drop down menu.

Open this menu and select the option that applies to your situation. If you have any difficulties when completing the online form, or if you have not heard from our services 5 business days after your submission, please contact our Administration team on 02 6125 2211 (option 1).



www.anu.edu.au/students/health-safety-wellbeing



Thank you



We are here to support you support your students! If we can be of any assistance, **please contact us.**

Student Safety and Wellbeing

Level 3, Health and Wellbeing Centre
Building 156 Joplin Lane, Kambri

T (02) 6125 2211

E student.wellbeing@anu.edu.au

W www.anu.edu.au/students/health-safety-wellbeing

Appointments available Monday to Friday 9am – 4pm

ANU Wellbeing and Support Line (24/7) 1300 050 327

DIVERSITY
BELONGING
INCLUSION
EQUITY
@CECC



Australian
National
University



Acknowledgement of Country

The Australian National University acknowledges, celebrates and pays our respects to the Ngunnawal and Ngambri people of the Canberra region and to all first nations Australians on whose traditional lands we meet and work, and whose cultures are among the oldest continuing cultures in human history.



TODAYS PRESENTATION

EXPLORE DIVERSITY, BELONGING,
INCLUSION AND EQUITY (DBIE)
IN THE COLLEGE.



Australian
National
University



Diversity Belonging Inclusion & Equity

Diversity, belonging, inclusion, and equity (DBIE) are integral to the culture of ANU's College of Engineering, Computing and Cybernetics (CECC) and the way that we learn and work together.

We aim to attract and retain a staff and student population that is reflective of a diversity of backgrounds, knowledge, experience and perspectives.

We aspire to be a College where staff and students know that their perspectives, skills, and lived experiences are valued and respected.



DIVERSITY GROUPS

- Aboriginal and Torres Strait Islanders
- Culturally and Linguistically Diverse (CALD)
- Disability and Mental Health
- Gender Equity
- LGBTQIA+
- Supporting Families



Australian
National
University



Introductions

DBIE @ CECC?



Katia Alexander

Associate Dean (DBIE)



Bianca Pimentel

(Deputy Chair) HR Manager



Melissa Neidorf

SOCY DBIE Working Group Lead



Lee-Anne McGuinness

Senior Advisor (DBIE)



Nan Yang

SOEN DBIE Working Group Lead



Josh Andres

SOCY DBIE Working Group Lead



Alex Potanin

+ Add a profile link

SOCO DBIE Working Group Lead

28 of 50 characters

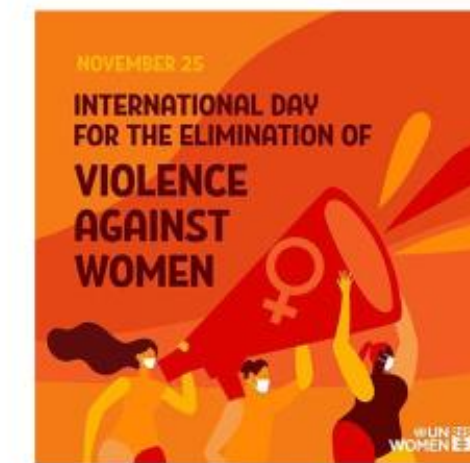
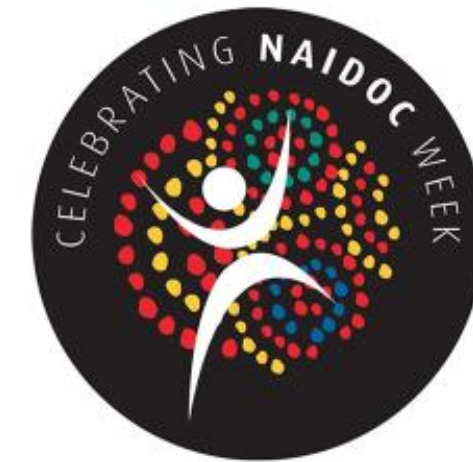


WHAT DOES THE DBIE TEAM DO?

- ❖ Support and celebrate diversity, belonging, inclusion and equity.
- ❖ Acknowledge dates which respond to inequalities and barriers to participation.
- ❖ Raise awareness and understanding through training.
- ❖ Corporate Memberships.
- ❖ Networking to support social connection and sense of belonging.
- ❖ Recognising the contributions of individuals and groups.



Inclusion Calendar



OFFICIAL



Inclusion Calendar Activities



Indigenous Weaving
LGBTQIA+ Ally Training
Disability Awareness Workshop
Indigenous Language workshop
Cultural Awareness Training

NAIDOC WEEK 2024
Indigenous Weaving



WORLD ENVIRONMENT DAY 2024



Feeling the vibe.....

- *Ask and use deep listening.*
- *Sense of respect.*
- *Sense of value.*
- *Sense of belonging.*
- *Foster curiosity, care and awareness*
- *Able to bring whole self to ANU*



Questions



For anonymous or non-anonymous questions, enquiries, feedback or suggestions, please reach out through our SharePoint contact us link

[Contact us \(sharepoint.com\)](#)





THANK YOU

Contact Us

Professor Katia Alexander and Lee-Anne McGuinness

E: inclusion.cecc@anu.edu.au

W: [Diversity, belonging, inclusion, equity | ANU College of Engineering, Computing & Cybernetics](#)

S: [CECC Diversity Belonging Inclusion and Equity - Home \(sharepoint.com\)](#)

TEQSA Provider ID: PRV12002 (Australian University) | CRICOS Provider Code: 00120C



Australian
National
University



TOUR OF FACILITIES

SOEN Education Officer will lead the tour, and then will return to Birch Building for Program Convenor Sessions

B ENG — BIRCH 1.08

B ENG R&D — BIRCH 1.08

B ENG SOFTWARE ENGINEERING — BIRCH 1.08

M ENG — BIRCH 1.09



CECC O WEEK SESSIONS

For information on Orientation Week events visit:
<https://orientation.anu.edu.au/o-week-events>